



## **Oboe Audition**

1. Major Scales: Prepare three (3) scales from memory from the following list (three-octaves where possible): C, G, D, A, E, F, Bb, Eb, Ab.
2. Orchestra Excerpts: The bracketed sections of the attached excerpts.
3. New Members Only: Prepare an excerpt from a solo or etude of your choice that best demonstrates your musical ability. The excerpt should be approximately two (2) minutes in length.

# 6 Excerpts

## POLOVETSIAN DANCES

from  
"PRINCE IGOR"  
Oboe I.

1

### № 8. ПЛЯСКА ПОЛОВЕЦКИХЪ ДѢВУШЕКЪ.

A. Borodine

*Presto.* *soft*  
*p*

*mf*

*f*

*fl.*

*C* *(tr)* *mf*

*1 marcato* *mf*

*1* *ff*

*D* *less mf*

*8* *p cresc.*

*9* *E* *f*

## Oboe I.

-9-

The musical score for Oboe I is written on eight staves. The key signature is one flat (B-flat major), and the time signature is 2/4. The score includes various musical notations and dynamics:

- Staff 1:** Starts with a trill (tr) on F. The music consists of eighth-note patterns.
- Staff 2:** Features a first ending bracket (1) and the marking *marcato assai*. Dynamics include *mf* and *f*.
- Staff 3:** Includes a slur (S) and a first ending bracket (1). Dynamics include *f* and *mf*.
- Staff 4:** Features a slur (R) and the marking *marcatissimo*. Dynamics include *ff*.
- Staff 5:** Starts with a first ending bracket (1) and a slur (H). Dynamics include *ff*.
- Staff 6:** Includes a first ending bracket (1) and a slur (H). Dynamics include *f*.
- Staff 7:** Features a first ending bracket (1) and a slur (H). Dynamics include *f* and *cresc. molto*.
- Staff 8:** Ends with a first ending bracket (1). Dynamics include *f*.

## Oboe I.

## № 17. ПОЛОВЕЦКАЯ ПЛЯСКА СЪ ХОРОМЪ.

Introduzione.  
Andantino.

1.

*dolce*

*pp*

**A**

*p con espress. e dolce*

**B**

*mf*

**B**

*dolce*

3

8

(swab)



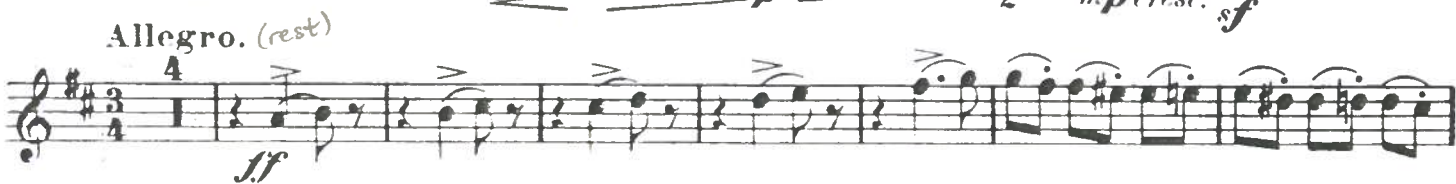
2.

4

in 4

Oboe I.

Allegro vivo. Fl.



# Oboe I.

5

*cresc.* *p* *cresc.* *p* *cresc.*  
*A* *A* *mf*  
*F* (rest) *ff*  
*tr*  
*tr*  
*f*  
*3*  
*3*  
*ff*  
*tr*  
*G* *8* *H* *13* *I* *Presto.*  
*10* *p*  
*1*  
*6*





# Oboe I.

7

1 *dolce* *count* 8

**Q Presto. 12**

*p*

6 **R** *ff*

**S**

6 *b2.* *2.* 1

1 1

**T** 23

**U** 1 1

*f* 1 9



## Oboe I.

V Allegro con spirito.

Measures 1-12 of the Oboe I part. The key signature is two sharps (F# and C#), and the time signature is 4/4. The music is marked 'V Allegro con spirito.' and features a series of eighth and sixteenth notes with slurs and accents. A sharp sign (#) appears above the staff in measure 10, and a fortissimo (ff) dynamic marking is present in measure 12.

W Più animato.

Measures 13-24 of the Oboe I part. The music is marked 'W Più animato.' and begins with a piano (p) dynamic. The tempo increases, and the notation includes more complex rhythmic patterns, including a triplet of eighth notes marked '3 + 4 +' in measure 20.

X

Measures 25-36 of the Oboe I part. The music is marked 'X' and features a mezzo-forte (mf) dynamic. The tempo remains 'Più animato', and the notation continues with eighth and sixteenth notes, some with slurs and accents.

4.

Measures 37-48 of the Oboe I part. The music is marked 'Y' and features a fortissimo (ff) dynamic. The tempo is still 'Più animato', and the notation includes eighth and sixteenth notes with slurs and accents.

Measures 49-60 of the Oboe I part. The music is marked 'Z' and features a fortissimo (ff) dynamic. The tempo is still 'Più animato', and the notation includes eighth and sixteenth notes with slurs and accents.

Measures 61-72 of the Oboe I part. The music is marked 'Z' and features a fortissimo (ff) dynamic. The tempo is still 'Più animato', and the notation includes eighth and sixteenth notes with slurs and accents. A large red bracket is placed at the end of the staff in measure 72.

# Ouverture zur Oper „Die Zauberflöte“

## OBOE I

W. A. Mozart, Werk 620

**Adagio**

Allegro 20

Wastelli

# 5.

This image shows a page of a musical score, likely for a symphony, featuring multiple staves with various instruments. The score includes dynamic markings such as *ff*, *f*, *sf*, *p*, and *cresc.*, as well as tempo changes from *Adagio* to *Allegro*. Red vertical bars highlight specific measures in the Violin I and Clarinet II parts.

The instruments visible include Violins I and II, Flutes I and II, and Clarinets I and II. The score is written in a key signature of two flats (B-flat and E-flat) and a 4/4 time signature. The tempo is marked *Allegro* at the top right, with a metronome marking of 20. The score is divided into sections labeled A, B, C, D, and E.

Key markings and features include:

- Tempo:** *Allegro* (20)
- Key Signature:** Two flats (B-flat and E-flat)
- Time Signature:** 4/4
- Dynamic Markings:** *ff*, *f*, *sf*, *p*, *cresc.*, *mp*, *more*
- Section Markers:** A, B, C, D, E
- Instrument Labels:** Viol. I, Viol. II, Fl. I, Fl. II, Cl. II
- Tempo Changes:** *Adagio* (marked with a fermata), *Allegro* (marked with a fermata)
- Red Vertical Bars:** Highlighting specific measures in the Violin I and Clarinet II parts.



# Ungarische Tänze

für Orchester

## Oboe I Nr. 5

THE PHILHARMONIC SOCIETY  
EVANSVILLE, INDIANA

Johannes Brahms  
Instrumentiert von Martin Schmeling

**Allegro**

Viol., Klar.

Handwritten notes: *passionato*, *f*, *Klar. p*, *f*, *p*, *sf*, *poco ritard.*, *2*, *- in tempo*, *Vivace*, *ff sf*, *poco ritard.*, *- in tempo*, *p legg.*, *poco ritard.*, *- in tempo*, *poco ritard.*, *- in tempo*, *Tempo I*, *Viol., Klar.*, *f passionato*, *p*, *sf*, *ff*, *poco rit.*, *p*, *ff*.



## Oboe I

## Nr. 6

*Vivace* *molto sostenuto* *più rit.* - - - *in tempo vivo*

*tranquillo* *vivace* *sf* *p* *sf* *sf* *sf*

*sf* *p* *sf* *sf* *p*

*sf* *p* *ff* *sostenuto*

*1.* *2.* *in tempo vivace* *p* *p legg.* *Accel.* *in tempo vivo* *rit.*

*1.* *2.* *Vivace* *poco sostenuto* *poco rit.* - - - *in tempo vivo*

*f* *8* *p* *f*

*sempre vivace* *sf* *p* *f* *Viol. I* *p* *3*

*sempre p e legg.* *pp*

*p* *f* *sf* *sf* *sf*

*sf* *sf* *p*

*sf* *p* *ff*