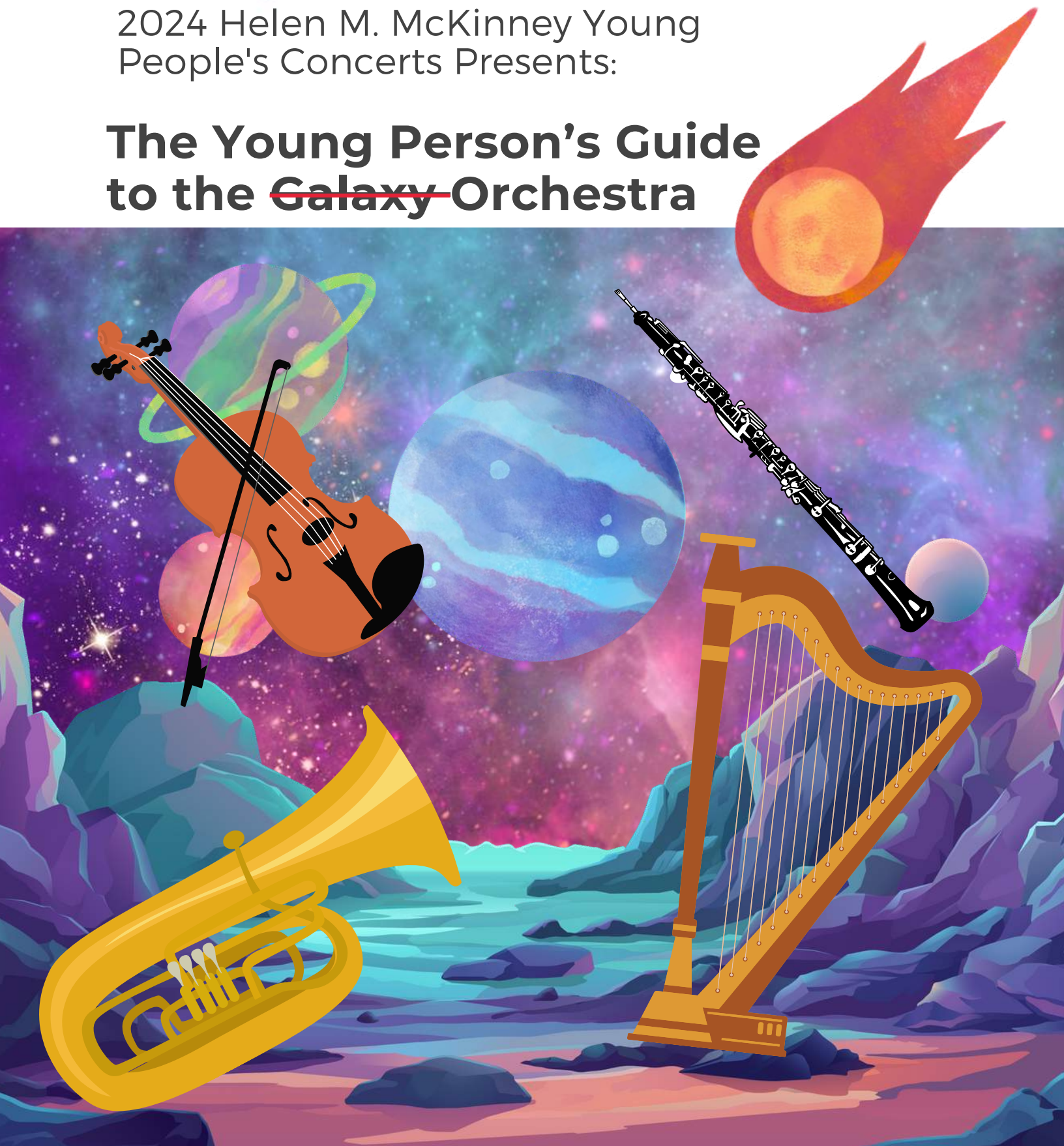




2024 Helen M. McKinney Young
People's Concerts Presents:

The Young Person's Guide to the ~~Galaxy~~ Orchestra





Contents

- 2 Letter to the teachers
- 3 Concert Program & Details
- 4 Instrument Constellations Lesson
- 5 Four Corners Instrument Family Cards
- 9 Theme and Variations Lesson Plan
- 11 Listening Map for “The Young Persons Guide to the Orchestra”
- 14 Audience STARS
- 15 To the Symphony and Beyond
- 16 Letter to the Orchestra

Helen M. McKinney Young People's Concerts made possible by the generosity of:

- Arts Council of Southwestern Indiana
- The Mesker Music Trust, Fifth Third Bank, Trustee
- Helen M. McKinney Memorial Fund Concert Trust
- Gibson County Community Foundation
- *With additional support from the Evansville Philharmonic Guild*



Letter to Teachers

Dear teachers of Evansville and beyond,

We are delighted to introduce "A Young Person's Guide to the ~~Galaxy~~ Orchestra," an exciting twist on the traditional program by Benjamin Britten. This educational guide is designed to prepare 3rd-5th grade students for the enchanting experience of listening to a live orchestra.

Through interactive activities and engaging content, students will embark on a musical journey, discovering the unique sounds and characteristics of each instrument family while exploring the concept of theme and variations.

We extend our gratitude to you, the teachers and administrators of your schools infusing an enthusiasm for music into your programs. Together, let us embark on a musical odyssey that will leave a lasting impression on the hearts and minds of our young learners.

To the symphony and beyond,

Kelsey Georgesen

Director of Education and
Community Outreach





About the Concert

At the Victory Theatre

600 Main St,
Evansville, IN 47708

Performance Times

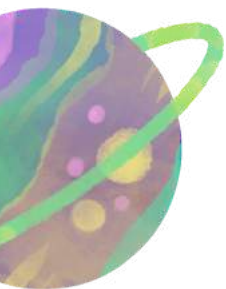
March 14th 9 a.m.
March 14th 10:30 a.m.
March 15th 9 a.m.
March 15th 10:30 a.m.

Program

Finale from William Tell Overture
by Gioachino Rossini

The Young Person's Guide to the Orchestra
by Benjamin Britten


"Imperial March" from Star Wars
by John Williams





Lesson Plan: Map the Instrument Constellations

Indiana Music Standards

A stylized illustration of a planet with a green ring, featuring various colored spots and patterns in shades of purple, blue, and yellow.

Lr.6.5.3 Identify and express age appropriate music concepts including form, phrasing, expressive qualities, and timbre through movement in listening examples, singing games, and/or simple folk dances

Objectives

Students will be able to describe the qualities of different instrument families.

Students will be able to identify different instrument families by sound.

Lesson Plan

1. Teacher introduces the instrument families, or “constellations” and students describe the qualities of each family. Use the included resources to capture students’ descriptions of the qualities of each instrument family.

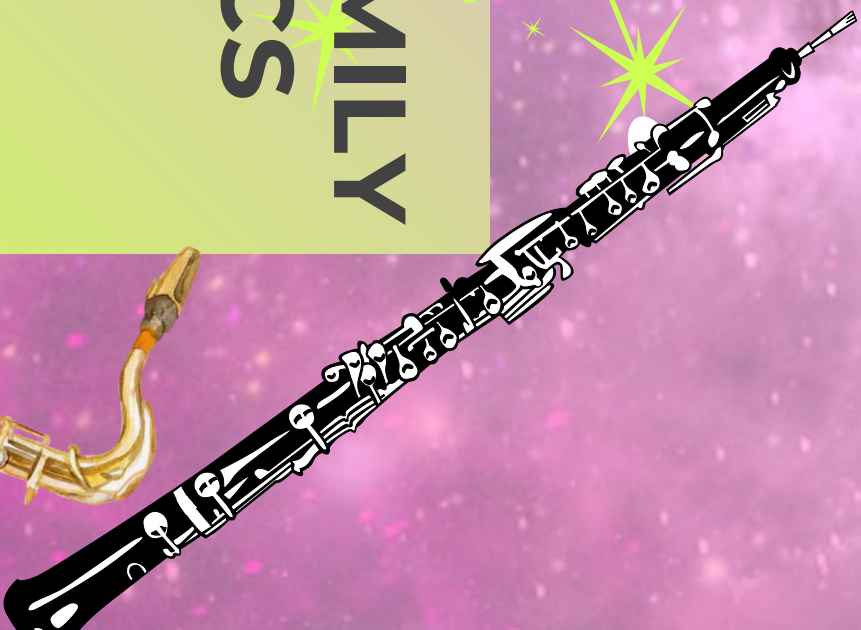
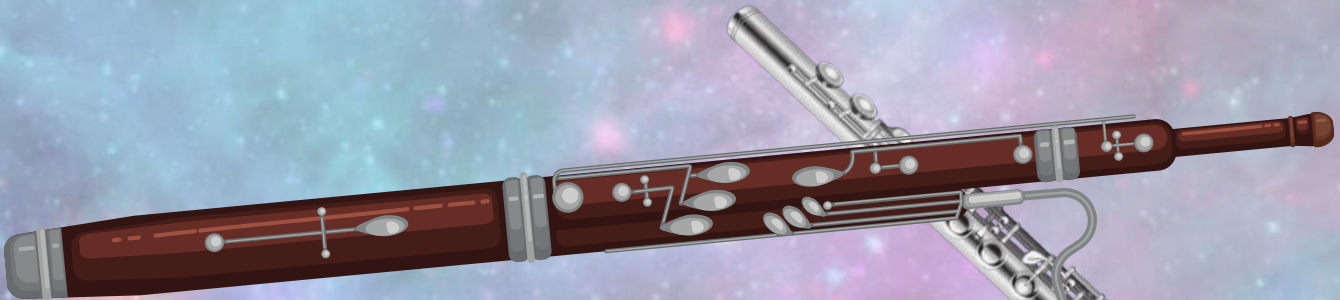
Use websites like [Inside the Orchestra](#) to showcase the different instruments.

2. Hang the instrument family signs in each corner of the room for a game of 4 corners. Students will listen to an excerpt of music, and walk to the corner of the room with the instrument family that they hear.



BRASS FAMILY CHARACTERISTICS

WOODWIND FAMILY CHARACTERISTICS



STRING FAMILY CHARACTERISTICS



PERCUSSION FAMILY CHARACTERISTICS






Lesson Plan: Theme & Variations

Indiana Music Standards

Cn.2.5.2 Discover, identify, and explore how music connects to other arts and humanities.

A stylized illustration of a planet with a prominent ring system, similar to Saturn. The planet is depicted with a mottled pattern of purple, blue, and green colors. The ring is a bright, glowing green.

Lr.6.5.3 Identify and express age appropriate music concepts including form, phrasing, expressive qualities, and timbre through movement in listening examples, singing games, and/or simple folk dances.

Cr.11.5.1 Plan, notate, and perform rhythmic speech compositions with text, including performance indicators such as tempo and dynamics.

Cr.11.5.3 Plan, arrange, and perform accompaniments to given melodies within specific guidelines.

Indiana Music Standards

Students will define theme and variations form and connect it to other examples in media and arts.

Students will demonstrate an understanding of theme and variations form through listening analysis of pieces.

Students will be able to compose and perform variations to existing melodies.



Lesson Plan: Theme & Variations

1. Teacher defines theme and variations and students think of examples of theme and variations in other forms of media. (Example: formulaic story plots in books and movies, variations of repeated artwork, etc.)

2. Students listen to examples of theme and variations and identify the theme or describe variations.

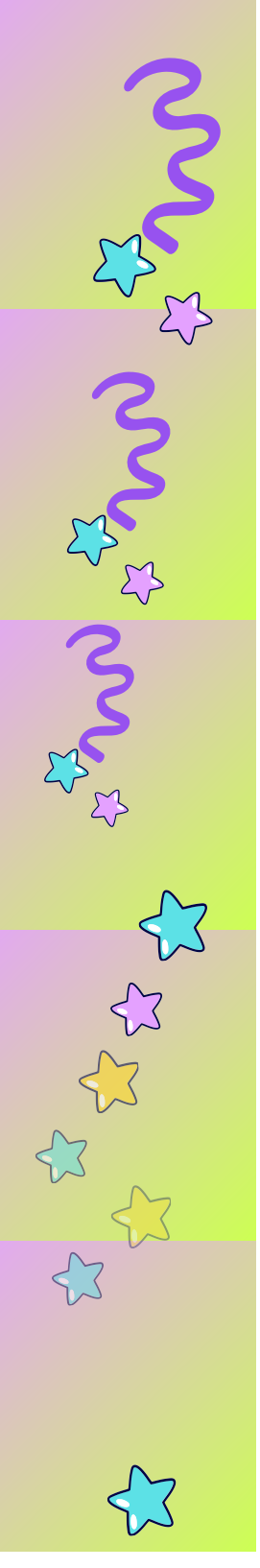
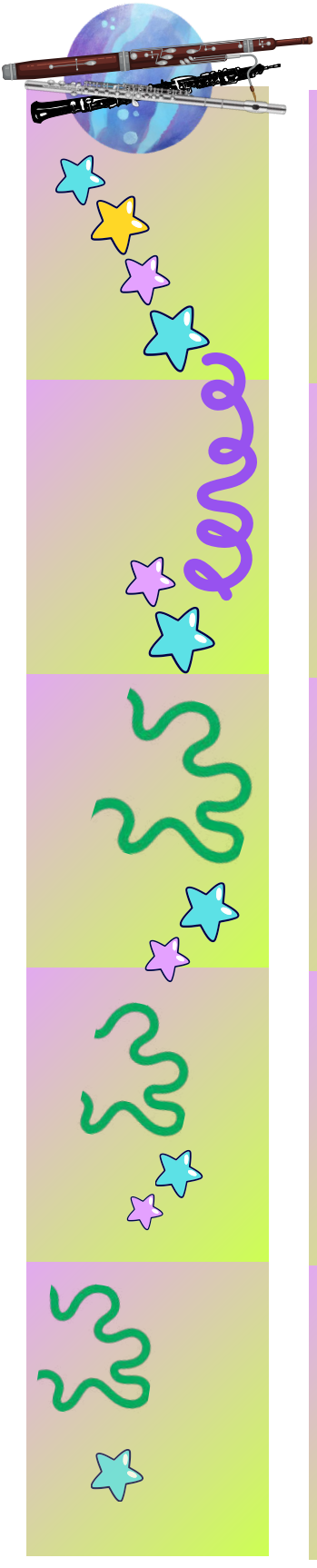
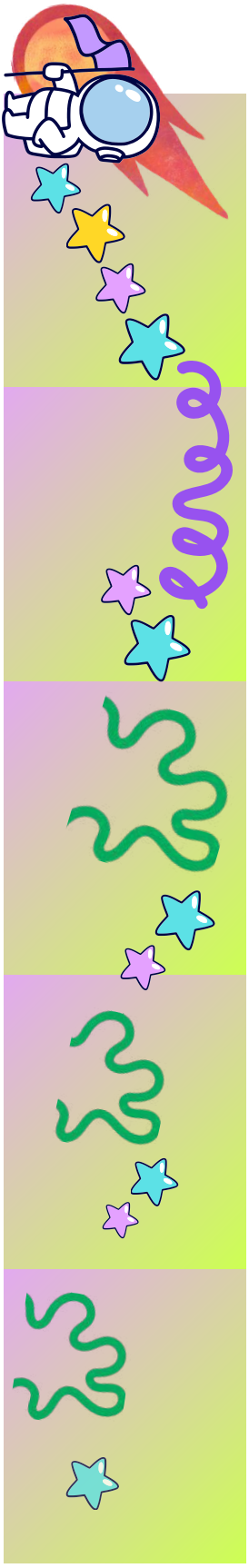
- i. "Twinkle, Twinkle, Little Star" variations by Mozart
- ii. Main theme from Harry Potter movies by John Williams
- iii. Theme and Variations song

3. Students create their own theme and variations independently or in a group with any familiar songs, such as "Row Row Row Your Boat," or the chorus of another familiar song.

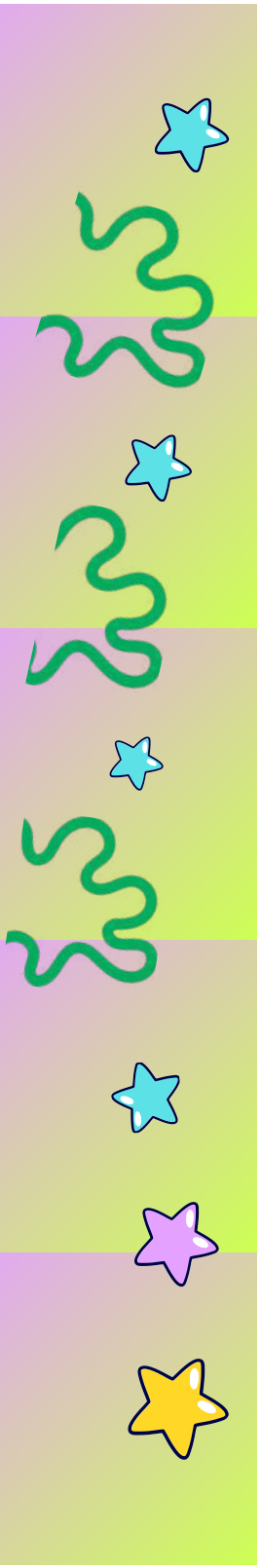
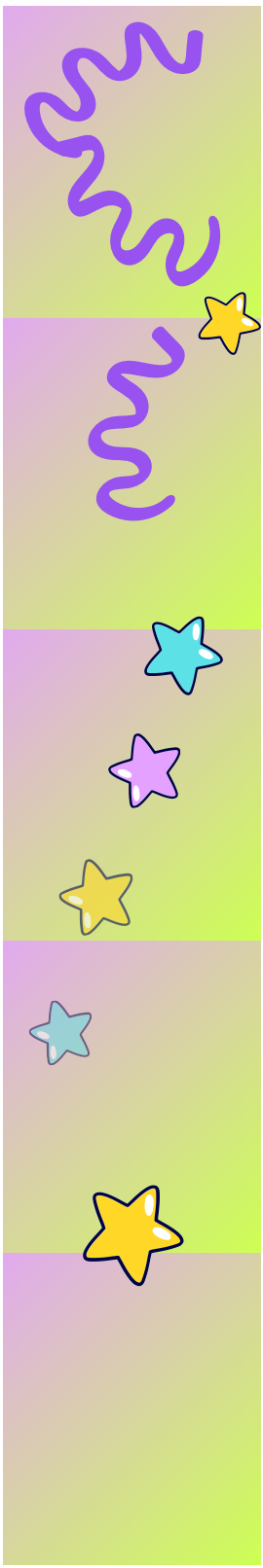
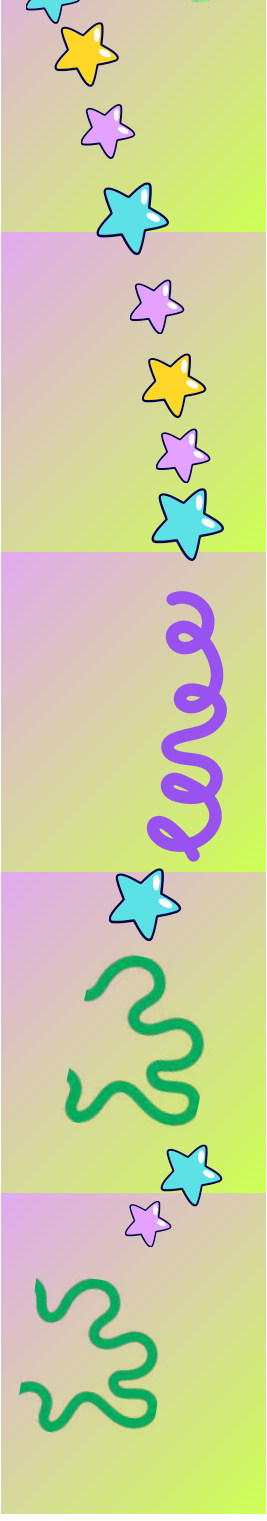
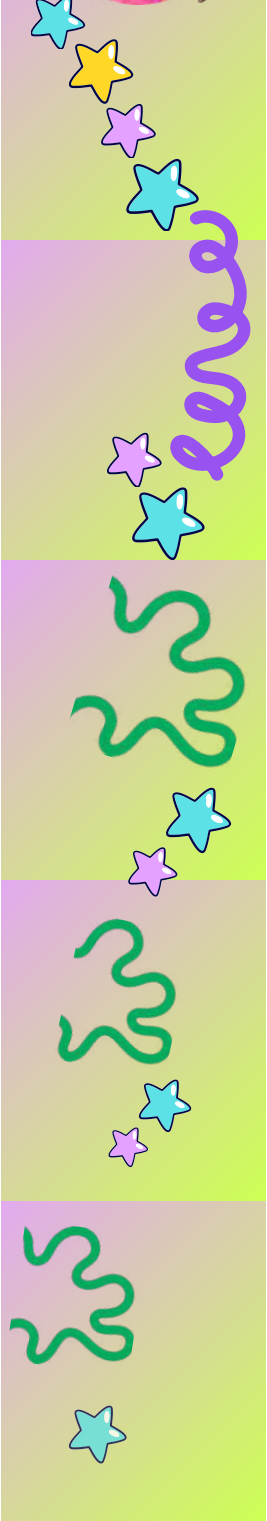
Optional variation: Use incredibox.com or a drum machine app to compose examples of theme and variations.

4. Students follow along with the included listening map for a pre-listening of "The Young Person's Guide to the Orchestra" by Benjamin Britten.

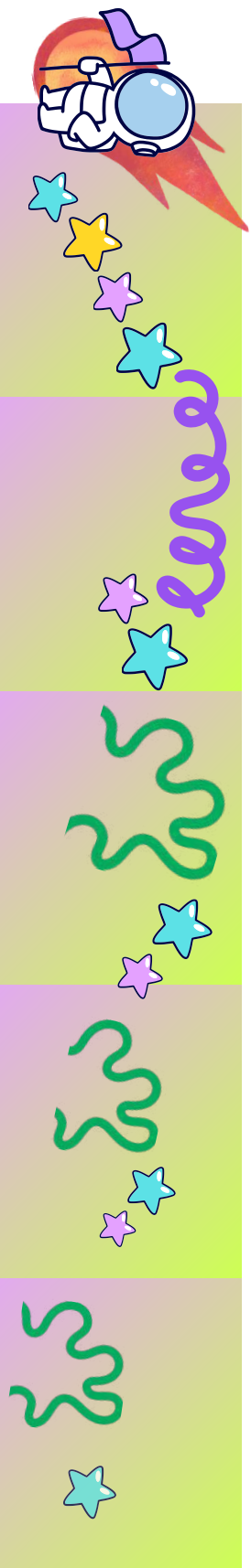
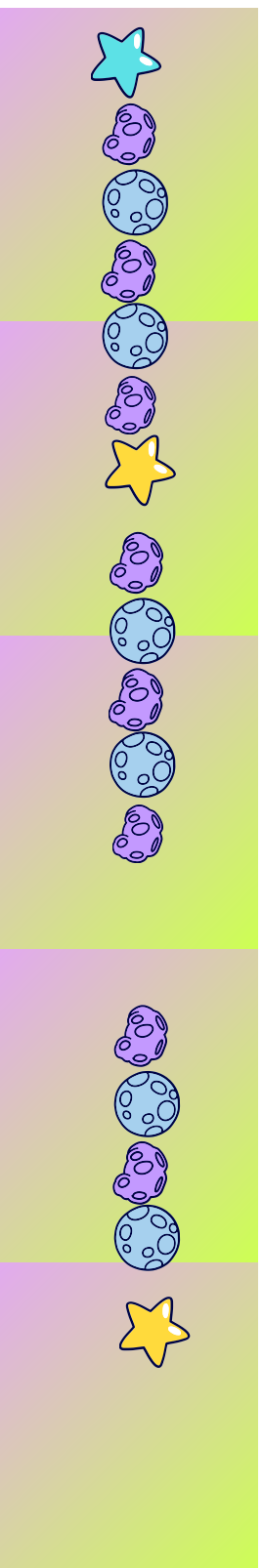
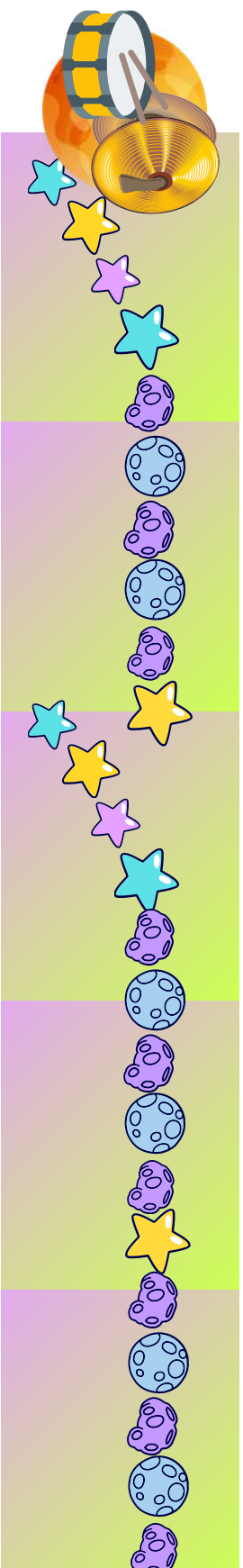
Listening Guide to “The Young Person’s Guide to the Orchestra” by Benjamin Britten



Listening Guide to “The Young Person’s Guide to the Orchestra” by Benjamin Britten



Listening Guide to “The Young Person’s Guide to the Orchestra” by Benjamin Britten





Our Audience are **STARs**!

Use the STAR acronym to make sure everyone has a great experience at the Victory Theatre!



Seated Be sure to stay in your seat so the people behind you can see!

Tuned In Pick an instrument to follow along with while you listen. It will help you notice more of the music!

Applause When the song is over, be sure to clap and cheer the musicians on!



Respectful Be sure to listen and stay quiet so everyone can hear the music.






To the Symphony and Beyond!

Now that you've seen the Evansville Philharmonic concert, let's talk about it. Answer these questions as a class, a small group, or independently.

- 
- A stylized illustration of a planet with a green ring, featuring a purple and blue surface with yellow and green spots, located on the left side of the page.
1. What was your favorite part of the concert?
 2. How did the music make you feel?
 3. Did anything surprise you about the concert? Was anything different than you expected?
 4. What instruments did you notice? How did they sound?
 5. What was different about listening to the performance in person instead of listening to a recording?
 6. What new questions do you have about the orchestra now that you've seen them perform?
- 
- A stylized illustration of a planet with a blue and purple surface, featuring white and blue spots, located on the right side of the page.



To the Symphony and Beyond!



Bonus: Write a letter to ask your questions and tell them what you thought of the performance. You can mail your letter to:

Evansville Philharmonic
20 NW 3rd St #500,
Evansville, IN 47708

