



## Violin I Audition

1. Major Scales: Prepare two (2) scales from memory from the following list (at least one should be 3 octaves): C, G, D, A, E, F, Bb, Eb, Ab.
2. Minor Scales (melodic): Prepare one (1) scale of your choice from the following list (may be played in 2 or 3 octaves): a, e, b f#, c#, d, g, c, f.
3. Orchestra Excerpts: The bracketed sections of the attached excerpts.
4. New Members Only: Prepare an excerpt from a solo or etude of your choice that best demonstrates your musical ability. The excerpt should be approximately two (2) minutes in length.

# DANSE BACCHANALE

C. SAINT-SAENS

## VIOLIN I

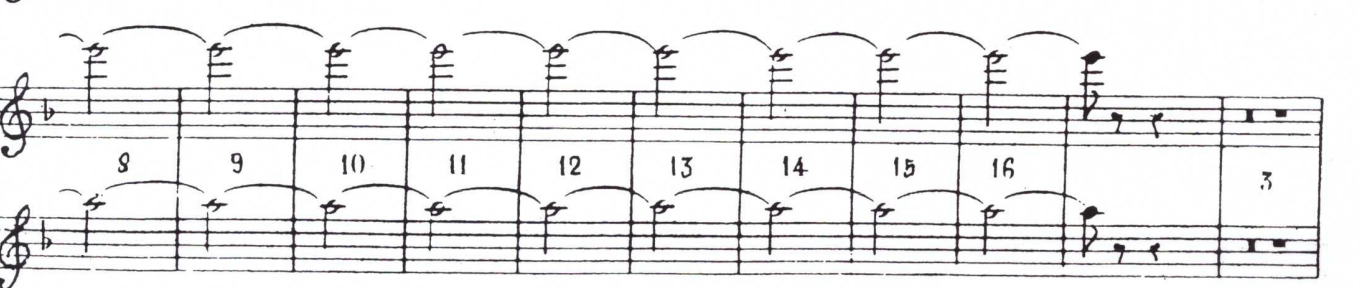
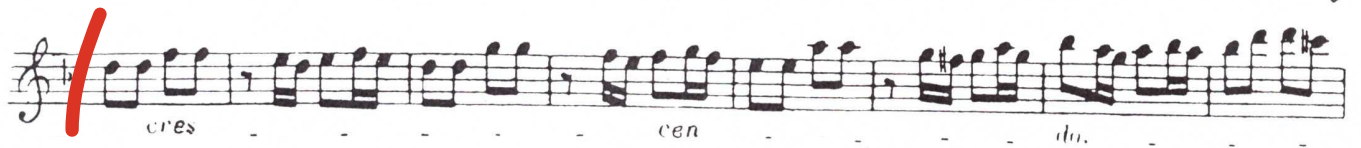
*pizz*  
*f* *Silezio.* *arco.* *p*

*poco*  
*a* *poco* *cres*  
*cen* *du.* *f*

*p*

VIOLIN I

3





**C**

*p*

*col legno*

*arco*

*pizz.*

*arco.*

**D**

*cres - cen - do.*

*f*

*di - mi - nu - en - do.*

*p*

*pizz.*

**Doppio più lento**

*cantabile.*

*1* *3*

*pizz.* *arco.*

*mf* *p*

**E<sub>b</sub>**

*mf* *sf* *sf* *sf* *f* *dim.*

# VIOLIN I

5

Tempo 4<sup>o</sup>

*p* *dim.* *p*

*F*

*cres* *cen*

*do.* *f*

*ff*

*tr*

*G* Di più in più animato.





Violin I musical score, measures 1-10. The music is in G major (one sharp) and 2/4 time. It begins with a forte (*ff*) dynamic. The first staff contains measures 1-4, the second staff measures 5-8, and the third staff measures 9-10. The music features a mix of eighth and sixteenth notes, often beamed together. A red bracket is drawn over the final measure of the second staff (measure 8).

*ff*

*non legato.*

SCENE III



Franz Suppé  
Light Cavalry Overture

VIOLIN I

**Maestoso.**

**Allegro.**

# Suppé — Light Cavalry Overture

3

## VIOLIN I

Violin I score for Suppé's Light Cavalry Overture, measures 1-16. The score is written for a single violin in treble clef, with a key signature of one sharp (F#). The tempo is marked *Allegretto brillante.* The dynamics range from *mf* (mezzo-forte) to *ff* (fortissimo). The music features a variety of rhythmic patterns, including eighth and sixteenth notes, and is characterized by frequent triplets. The first system (measures 1-4) begins with a *mf* dynamic and includes a triplet of eighth notes. The second system (measures 5-8) continues with a *fz* (forzando) dynamic. The third system (measures 9-12) features a *f* (forte) dynamic and a triplet of eighth notes. The fourth system (measures 13-16) begins with a *ff* dynamic and includes a triplet of eighth notes. The fifth system (measures 17-20) continues with a *ff* dynamic and a triplet of eighth notes. The sixth system (measures 21-24) features a *ff* dynamic and a triplet of eighth notes. The seventh system (measures 25-28) begins with a *mf* dynamic and includes a triplet of eighth notes. The eighth system (measures 29-32) continues with a *f* dynamic and a triplet of eighth notes. The ninth system (measures 33-36) features a *ff* dynamic and a triplet of eighth notes. The tenth system (measures 37-40) begins with a *ff* dynamic and includes a triplet of eighth notes. The eleventh system (measures 41-44) continues with a *ff* dynamic and a triplet of eighth notes. The twelfth system (measures 45-48) features a *ff* dynamic and a triplet of eighth notes. The thirteenth system (measures 49-52) begins with a *ff* dynamic and includes a triplet of eighth notes. The fourteenth system (measures 53-56) continues with a *ff* dynamic and a triplet of eighth notes. The fifteenth system (measures 57-60) features a *ff* dynamic and a triplet of eighth notes. The sixteenth system (measures 61-64) begins with a *ff* dynamic and includes a triplet of eighth notes. The seventeenth system (measures 65-68) continues with a *ff* dynamic and a triplet of eighth notes. The eighteenth system (measures 69-72) features a *ff* dynamic and a triplet of eighth notes. The nineteenth system (measures 73-76) begins with a *ff* dynamic and includes a triplet of eighth notes. The twentieth system (measures 77-80) continues with a *ff* dynamic and a triplet of eighth notes. The twenty-first system (measures 81-84) features a *ff* dynamic and a triplet of eighth notes. The twenty-second system (measures 85-88) begins with a *ff* dynamic and includes a triplet of eighth notes. The twenty-third system (measures 89-92) continues with a *ff* dynamic and a triplet of eighth notes. The twenty-fourth system (measures 93-96) features a *ff* dynamic and a triplet of eighth notes. The twenty-fifth system (measures 97-100) begins with a *ff* dynamic and includes a triplet of eighth notes. The twenty-sixth system (measures 101-104) continues with a *ff* dynamic and a triplet of eighth notes. The twenty-seventh system (measures 105-108) features a *ff* dynamic and a triplet of eighth notes. The twenty-eighth system (measures 109-112) begins with a *ff* dynamic and includes a triplet of eighth notes. The twenty-ninth system (measures 113-116) continues with a *ff* dynamic and a triplet of eighth notes. The thirtieth system (measures 117-120) features a *ff* dynamic and a triplet of eighth notes. The thirty-first system (measures 121-124) begins with a *ff* dynamic and includes a triplet of eighth notes. The thirty-second system (measures 125-128) continues with a *ff* dynamic and a triplet of eighth notes. The thirty-third system (measures 129-132) features a *ff* dynamic and a triplet of eighth notes. The thirty-fourth system (measures 133-136) begins with a *ff* dynamic and includes a triplet of eighth notes. The thirty-fifth system (measures 137-140) continues with a *ff* dynamic and a triplet of eighth notes. The thirty-sixth system (measures 141-144) features a *ff* dynamic and a triplet of eighth notes. The thirty-seventh system (measures 145-148) begins with a *ff* dynamic and includes a triplet of eighth notes. The thirty-eighth system (measures 149-152) continues with a *ff* dynamic and a triplet of eighth notes. The thirty-ninth system (measures 153-156) features a *ff* dynamic and a triplet of eighth notes. The fortieth system (measures 157-160) begins with a *ff* dynamic and includes a triplet of eighth notes. The forty-first system (measures 161-164) continues with a *ff* dynamic and a triplet of eighth notes. The forty-second system (measures 165-168) features a *ff* dynamic and a triplet of eighth notes. The forty-third system (measures 169-172) begins with a *ff* dynamic and includes a triplet of eighth notes. The forty-fourth system (measures 173-176) continues with a *ff* dynamic and a triplet of eighth notes. The forty-fifth system (measures 177-180) features a *ff* dynamic and a triplet of eighth notes. The forty-sixth system (measures 181-184) begins with a *ff* dynamic and includes a triplet of eighth notes. The forty-seventh system (measures 185-188) continues with a *ff* dynamic and a triplet of eighth notes. The forty-eighth system (measures 189-192) features a *ff* dynamic and a triplet of eighth notes. The forty-ninth system (measures 193-196) begins with a *ff* dynamic and includes a triplet of eighth notes. The fiftieth system (measures 197-200) continues with a *ff* dynamic and a triplet of eighth notes. The fifty-first system (measures 201-204) features a *ff* dynamic and a triplet of eighth notes. The fifty-second system (measures 205-208) begins with a *ff* dynamic and includes a triplet of eighth notes. The fifty-third system (measures 209-212) continues with a *ff* dynamic and a triplet of eighth notes. The fifty-fourth system (measures 213-216) features a *ff* dynamic and a triplet of eighth notes. The fifty-fifth system (measures 217-220) begins with a *ff* dynamic and includes a triplet of eighth notes. The fifty-sixth system (measures 221-224) continues with a *ff* dynamic and a triplet of eighth notes. The fifty-seventh system (measures 225-228) features a *ff* dynamic and a triplet of eighth notes. The fifty-eighth system (measures 229-232) begins with a *ff* dynamic and includes a triplet of eighth notes. The fifty-ninth system (measures 233-236) continues with a *ff* dynamic and a triplet of eighth notes. The sixtieth system (measures 237-240) features a *ff* dynamic and a triplet of eighth notes. The sixty-first system (measures 241-244) begins with a *ff* dynamic and includes a triplet of eighth notes. The sixty-second system (measures 245-248) continues with a *ff* dynamic and a triplet of eighth notes. The sixty-third system (measures 249-252) features a *ff* dynamic and a triplet of eighth notes. The sixty-fourth system (measures 253-256) begins with a *ff* dynamic and includes a triplet of eighth notes. The sixty-fifth system (measures 257-260) continues with a *ff* dynamic and a triplet of eighth notes. The sixty-sixth system (measures 261-264) features a *ff* dynamic and a triplet of eighth notes. The sixty-seventh system (measures 265-268) begins with a *ff* dynamic and includes a triplet of eighth notes. The sixty-eighth system (measures 269-272) continues with a *ff* dynamic and a triplet of eighth notes. The sixty-ninth system (measures 273-276) features a *ff* dynamic and a triplet of eighth notes. The seventieth system (measures 277-280) begins with a *ff* dynamic and includes a triplet of eighth notes. The seventy-first system (measures 281-284) continues with a *ff* dynamic and a triplet of eighth notes. The seventy-second system (measures 285-288) features a *ff* dynamic and a triplet of eighth notes. The seventy-third system (measures 289-292) begins with a *ff* dynamic and includes a triplet of eighth notes. The seventy-fourth system (measures 293-296) continues with a *ff* dynamic and a triplet of eighth notes. The seventy-fifth system (measures 297-300) features a *ff* dynamic and a triplet of eighth notes. The seventy-sixth system (measures 301-304) begins with a *ff* dynamic and includes a triplet of eighth notes. The seventy-seventh system (measures 305-308) continues with a *ff* dynamic and a triplet of eighth notes. The seventy-eighth system (measures 309-312) features a *ff* dynamic and a triplet of eighth notes. The seventy-ninth system (measures 313-316) begins with a *ff* dynamic and includes a triplet of eighth notes. The eightieth system (measures 317-320) continues with a *ff* dynamic and a triplet of eighth notes. The eighty-first system (measures 321-324) features a *ff* dynamic and a triplet of eighth notes. The eighty-second system (measures 325-328) begins with a *ff* dynamic and includes a triplet of eighth notes. The eighty-third system (measures 329-332) continues with a *ff* dynamic and a triplet of eighth notes. The eighty-fourth system (measures 333-336) features a *ff* dynamic and a triplet of eighth notes. The eighty-fifth system (measures 337-340) begins with a *ff* dynamic and includes a triplet of eighth notes. The eighty-sixth system (measures 341-344) continues with a *ff* dynamic and a triplet of eighth notes. The eighty-seventh system (measures 345-348) features a *ff* dynamic and a triplet of eighth notes. The eighty-eighth system (measures 349-352) begins with a *ff* dynamic and includes a triplet of eighth notes. The eighty-ninth system (measures 353-356) continues with a *ff* dynamic and a triplet of eighth notes. The ninetieth system (measures 357-360) features a *ff* dynamic and a triplet of eighth notes. The ninety-first system (measures 361-364) begins with a *ff* dynamic and includes a triplet of eighth notes. The ninety-second system (measures 365-368) continues with a *ff* dynamic and a triplet of eighth notes. The ninety-third system (measures 369-372) features a *ff* dynamic and a triplet of eighth notes. The ninety-fourth system (measures 373-376) begins with a *ff* dynamic and includes a triplet of eighth notes. The ninety-fifth system (measures 377-380) continues with a *ff* dynamic and a triplet of eighth notes. The ninety-sixth system (measures 381-384) features a *ff* dynamic and a triplet of eighth notes. The ninety-seventh system (measures 385-388) begins with a *ff* dynamic and includes a triplet of eighth notes. The ninety-eighth system (measures 389-392) continues with a *ff* dynamic and a triplet of eighth notes. The ninety-ninth system (measures 393-396) features a *ff* dynamic and a triplet of eighth notes. The hundredth system (measures 397-400) begins with a *ff* dynamic and includes a triplet of eighth notes.



# Suppé — Light Cavalry Overture

4

## VIOLIN I

Andantino con moto.

First system of the Andantino con moto section. It consists of three staves of music. The first staff begins with a forte (*f*) dynamic and the instruction "una corda". The music features a mix of eighth and sixteenth notes, with some triplets indicated by a '3' over the notes. The second and third staves continue the melodic line with similar rhythmic patterns.

Tempo primo.

16

Second system of the Tempo primo section, starting at measure 16. It consists of seven staves of music. The first staff begins with a fortissimo (*ff*) dynamic. The music is characterized by rapid sixteenth-note passages and chords. The subsequent staves continue this fast-paced texture. The system concludes with three measures marked with first, second, and third endings (1., 2., 3.).

*FINE.*